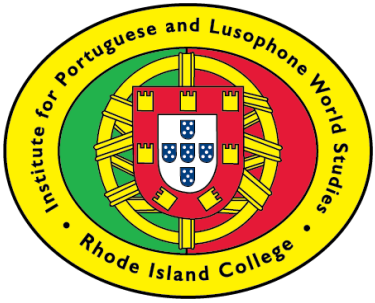


January 7, 2022



## YEAR IN REVIEW: 2021 ACTIVITIES OF THE INSTITUTE FOR PORTUGUESE AND LUSOPHONE WORLD STUDIES AT RHODE ISLAND COLLEGE

Dear Friends,

*For most of us, the impact of the global health care crisis intensified in our lives in 2021, in our communities, and in our academic and cultural programs. Despite the challenges, we successfully launched the first Portuguese/English Medical Interpreter Training Program at Rhode Island College to a combined cohort of RIC students and community members; we deepened our ties with our international partners; and we celebrated a most talented Portuguese Graduating Class!*

*So, I hope you enjoy our highlights of 2021! On behalf of the Institute's Community Advisory Board, Faculty Advisory Council and Student Interns, thank you for your continued support of Portuguese at Rhode Island College!*

*Warmly/Saudações cordiais,  
Dr. Sílvia Oliveira, IPLWS Director*

### CELEBRATING PORTUGUESE STUDIES AT RHODE ISLAND COLLEGE

#### IPLWS Scholarship Awards

##### John A. and Mary V. Lima Memorial Scholarship in Portuguese Studies



Established in 2010 by the late Mr. John Lema, Institute's benefactor and friend, in honor of his parents, John A. and Mary V. Lima, the fund awards annually scholarships to academically meritorious undergraduate students majoring or minoring in Portuguese at Rhode Island College. The \$2,000 scholarships are competitive and applications are evaluated on the basis of students' GPA, essays, community involvement and faculty recommendations. Since 2010, the John A. and Mary V. Lima Memorial Fund has awarded over \$44,000 to students studying Portuguese at Rhode Island College.

#### 2021 Lima Scholars

##### Joshua Abreu

World Languages Education  
major-Portuguese  
concentration/Spanish  
minor  
(Senior class)

*"As a first-generation Luso-American, Portuguese culture and the Portuguese language have always been a guiding factor in my life. So much so, that it has driven me to pursue a degree in Portuguese Education.*

##### Sydney Hajder

Medical Imaging major  
(Intended)/Portuguese  
minor  
(Freshman class)

*"Growing up with grandparents who spoke very little English, I was taught Portuguese at a young age in order to communicate with them. As a child, my avó was always reading Portuguese stories*

##### Eva Coutinho

Psychology major/Chemical  
Dependency and Addiction  
Studies major/  
Gender and Women's  
Studies minor/Portuguese  
minor  
(Senior class)

*"I was raised in Cape Verde, an archipelago of 10 islands on the west Coast of Africa. Cape Verde's native language is Cape-Verdean creole and the official language is*

*I plan to continue my studies by enrolling in a master's program centered around World Language Education with a focus in Portuguese and Spanish."*

*to me and took me to festas all around the area. Learning more about my family's heritage and culture has always been fascinating to me. My dream job is to become a radiographer. Eventually, I would love to work in a hospital or sports medicine facility but stay in the New England area where my second language will benefit the most."*

*Portuguese. I want to be a multicultural competent psychologist who can truly see and support the healing of everyone, especially those in this community. Understanding their identities, worldviews, cultural upbringings all inform the way we navigate the world today. I want to make sure that they receive evidence-based and credible information about mental health and psychology in the language that touches their heart, in this case, Portuguese."*

---

## **2021 Prémio em Estudos Portugueses (Awarded at Cap & Gown Convocation)**

Sponsored by the IPLWS, the *Prémio em Estudos Portugueses* in the amount of \$250.00 recognizes the best graduating major in Portuguese.

2021 Prémio em Estudos Portugueses awardee:

**Joshua Abreu**

World Languages Education major - Portuguese concentration/Spanish minor

---

## **Sigma Chapter of Phi Lambda Beta National Collegiate Portuguese Honor Society**

The Sigma chapter of Phi Lambda Beta National Collegiate Portuguese Honor Society was chartered at Rhode Island College in 2012. The society strives to stimulate greater interest in the advanced study of the Portuguese language and Luso-Afro-Brazilian cultures and literatures; reward outstanding achievement in the field; and strengthen ties between Portuguese college and university faculty members, their students, and the AATSP (American Association of Teachers of Spanish and Portuguese).

### **2021 Inductees:**

- ~Joshua Abreu, World Language Education major-Portuguese concentration/Spanish minor
  - ~Eva Coutinho, Psychology major/Chemical Dependency and Addiction Studies major/Portuguese minor/Gender and Women's Studies minor
  - ~Lena Craig, FSEHD Credential Review Pathway - World Language Education -Portuguese and Spanish
  - ~Marlene DaSilva, Health Sciences major/Portuguese minor
  - ~Casemiro Raposo, Modern Languages major - Spanish concentration/Portuguese minor
  - ~Kassandra do Rosario, Sociology major/Justice Studies major/Portuguese minor
- 

## **Other Prestigious Awards**

**2021 CLS awardee: Joshua Abreu**  
**Country/language: Brazil/Portuguese**

The Critical Language Scholarship (CLS) Program of the U.S. Department of State is a summer study abroad opportunity for American college and university students to learn

languages essential to America's engagement with the world.

**2021 Beatrice Demers Fellowship: Lena Craig**  
**Country/language: Azores (Portugal)/Portuguese**  
Fellowship for Rhode Island residents and students at a Rhode Island college or university who wish to pursue foreign language study.

## MUITOS PARABÉNS, 2021 Graduates in Portuguese Studies!

~**Joshua Abreu** (East Providence, RI)  
Bachelor of Arts in World Languages Education with a Concentration in Portuguese and a Minor in Spanish.  
*Graduation Honors: Summa Cum Laude*

~**Guilhermina Dasilva** (Pawtucket, RI)  
Bachelor of Science in Nursing and a Minor in Portuguese.

~**Marlene DaSilva** (Bristol, RI)  
Bachelor of Science in Health Sciences and a Minor in Portuguese.

~**Uzziel Gomez** (Providence, RI)  
Bachelor of Science in Nursing and a Minor in Portuguese.  
*Graduation Honors: Cum Laude*

~**Raquel Martins** (East Providence, RI)  
Bachelor of Social Work and a Minor in Portuguese.

~**Casemiro Raposo** (Pawtucket, RI)  
Bachelor of Arts in Modern Languages with a Concentration in Spanish and a Minor in Portuguese.

~**Sonia Rodrigues** (Central Falls, RI)  
Bachelor of Arts in Youth Development and a Minor in Portuguese; Certificate of Undergraduate Study in Nonprofit Studies.

~**Kassandra do Rosario** (Pawtucket, RI)  
Bachelor of Arts in Justice Studies; Bachelor of Arts in Sociology and a Minor in Portuguese.  
*Graduation Honors: Magna Cum Laude*

~**Lena Craig** (Foster, RI)  
FSEHD Credential Review Pathway - World Languages Education Certification in Portuguese and Spanish.

## 2021 Lectures and New Programs

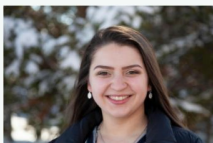


The RIC Sigma Chapter of *Phi Lambda Beta*  
National Collegiate Portuguese Honor Society  
presents:



**"How has Portuguese Foreign Policy evolved since the 15th Century?"**

A Keynote Lecture by  
Sabrina Brum' 19:



April 23, 2021: Keynote Lecture by Sabrina Brum' 19: "How has Portuguese Foreign Policy evolved since the 15th century?"

October 2020-April 2021: *Transatlantic Dialogues*, a webinar series co-organized with the Centro de Estudos Humanísticos da Universidade dos Açores/American Corners-UAç and other US partners. RIC faculty presenters: Dr. Amy Barlow (Library Sciences), Dr. Anabela Resende da Maia (Biology), Dr. Sílvia Oliveira (Portuguese), and former IPLWS Director, Marie R. Fraley.

Session 5 - December 7th  
"The Importance of Being Counted: The Campaign to Make Portuguese Count in the 2020 U.S. Census"

Main speakers:  
Diniz Borges and Marie R. Fraley

December 7, 2020:  
**"The Importance of Being Counted": The Campaign to Make Portuguese Count in the 2020 U.S. Census**

Marie R. Fraley, RI, PALCUS National Census Director; fmr IPLWS Director  
Diniz Borges, FSU



The following webinars are presented by Rhode Island College faculty and are sponsored by the IPLWS:

**Session 7 - December 11th**  
 Priorities of American Foreign Policy and the Transatlantic Relationship Today

December 11, 2020:  
**Priorities of American Foreign Policy and the Transatlantic Relationship Today**

Luis Andrade, UAc  
 Amy Barlow, RIC

**Session 8 - March 8th**  
 Portuguese-American Life Writing

March 8, 2021:  
**Portuguese-American Life Writing**

Silvia Oliveira, RIC/IPLWS  
 Francisco Cota Fagundes, UMass-A,  
 Vamberto de Freitas, UAc

**Session 12 - April 22nd**  
 Marine Resource Management and Anthropogenic Pressures in the Context of Portuguese-American Relations

April 22, 2021:  
**Marine Resource Management and Anthropogenic Pressures in the Context of Portuguese-American Relations**

Anabela Resende da Maia, RIC  
 João Gil Pereira, UAc

**PORTUGUESE/ENGLISH MEDICAL INTERPRETER TRAINING**

Language access professionals in a tight marketplace will require an advanced credential to remain competitive in the job market. The new Certificate of Continuing Studies in Medical Interpreter Training in Portuguese and English is designed to provide the advanced training and skills needed to succeed in this competitive market.

**Program Objectives:**

- Provide students with the skills and knowledge to work as medical interpreters in a variety of settings.
- Prepare students to work in a variety of settings, including hospitals, clinics, and community health centers.
- Prepare students to work in a variety of settings, including hospitals, clinics, and community health centers.

**Questions & Answers**

- What is the application fee, and when will fees be charged?
- What is the program?
- What is the cost of the program?
- Will the program offer Continuing Education Units (CEUs)?
- What are the benefits and fees for the program?
- What is the contact information for the program?

## New Certificate of Continuing Studies in Medical Interpreter Training in Portuguese/English

The IPLWS partnered with the Office of Professional Studies and Continuing Education (PSCE) to offer a Certificate of Continuing Studies in Medical Interpreter Training in Portuguese and English, successfully launched in the Fall of 2021 for RIC students and non-degree students from the community.

Visit the [program website](#) for more information.

# PROMOTING PORTUGUESE LANGUAGE AND LUSOPHONE CULTURES IN THE COMMUNITY

October 2, 2021: Rhode Island Foreign Language Association (RIFLA) Virtual Fall Conference: Interculturality is Our Reality.

**RIFLA 2021 VIRTUAL Fall Conference**

When: 02 Oct 2021, 8:00 AM - 2:30 PM  
 Location: VIRTUAL  
 Registered: 88 registrants

**Registration**

- Administrator/Policymaker/Parent Special registration category for administrators, policymakers, and parent leaders invited by RIFLA members. Please contact rlfen@rifa.com for registration code.
- Late Member Registration - \$50.00
- Late or On-Site Non-Member Registration Fee - \$60.00
- Late or On-Site Student Member Registration - \$30.00 (please email rlfen@rifa.com for the registration code)
- Member Conference Fee - \$40.00
- Non-Member Conference Fee - \$60.00
- Presenter 2021 (1 presenter is free) This year's presenter registration is FREE for 1 presenter. All other presenters should register at the member/non-member rate.
- Public Member
- Regional Organization Member Rate - \$40.00
- RIFLA Board & Conference Committee Member Registration - \$20.00
- Sponsor: \$100 coffee break breakout noon opportunity - \$100.00  
 Give a virtual 20 minute presentation during exhibit break time.

**ANNOUNCING**  
**RHODE ISLAND FOREIGN LANGUAGE ASSOCIATION**  
**2021 VIRTUAL FALL CONFERENCE**  
**Interculturality Is Our Reality**

Saturday, October 2nd, 2021  
 8:00 AM - 2:30 PM

**Keynote Speaker: Dr. Manuela Wagner**

Manuela Wagner holds a Ph.D. in English Studies with a specialization in linguistics from Graz University, Austria. Her research focuses on the integration of Intercultural Competence and Intercultural Citizenship (Byram, 1997, 2008) in (language) education and across the curriculum from elementary school through postsecondary education. She is particularly interested in the interplay of theory and practice and has been part of and helped create communities of practice to implement theories of Intercultural Competence and Citizenship as well as related theoretical frameworks (theories of criticality, intercultural communication, social justice, intellectual humility) in practice. The resulting book projects include the co-edited volumes *Teaching Intercultural Competence Across the Age Range: From Theory to Practice* (2016) and *Education for Intercultural Citizenship: Principles in Practice* (2017), and the co-authored book *Teaching Intercultural Citizenship Across the Curriculum: The Role of Language Education* (2019). She also investigates the role of educators as advocates for all (language) learners.

**#RIFLA2021 features the following strands:**  
 HL = Heritage Language  
 IC = Intercultural Competence  
 TP = Teaching for Proficiency  
 Tech = Technology-assisted Language Learning

## DID YOU KNOW?

Paintings by José L. Santos, from his Portuguese-American Series, are on exhibit at the Guardo Hall School of Social Work (Main Lobby) at Rhode Island College.



More about [José L. Santos' art](#)  
Visit the exhibit at [Guardo Hall School of Social Work](#)

Thank you for your kind attention.  
Sincerely,  
Dr. Sílvia Oliveira, IPLWS Director  
[soliveira@ric.edu](mailto:soliveira@ric.edu)  
[\(401\) 456-8496](tel:(401)456-8496)

**Share the IPLWS Newsletter with a friend!**

*Rhode Island College is a regional comprehensive public college that serves more than 7,000 undergraduate, graduate and doctoral students through its five schools: the Faculty of Arts and Sciences, the Feinstein School of Education and Human Development, the School of Business, the School of Nursing and the School of Social Work. Established in 1854, we are Rhode Island's first public institution of higher education. For more information, visit: <https://www.ric.edu/>*

*Founded in 2006, the Institute for Portuguese and Lusophone World Studies supports the Portuguese Studies academic program at Rhode Island College, bridges the connection between Rhode Island College and the Lusophone community, and pursues scholarly and cultural research in the areas of the Portuguese language and Lusophone cultures. For more information, visit: <https://www.ric.edu/department-directory/institute-portuguese-and-lusophone-world-studies>*

**R H O D E  
I S L A N D  
C O L L E G E**

**Institute for  
Portuguese and  
Lusophone World  
Studies at Rhode  
Island College**

**PORTUGUESE  
STUDIES  
PROGRAM**

